

(*) = TO BE DEFINED INTO ORDER

PLEASE DEFINE POSITIONING OF:

- HYDRAULIC POWER UNIT
- PUSH BUTTON

FENCES AND SAFETY DEVICES
AND PROTECTIONS HAVE TO
BE DEFINED BY THE
INSTALLATION MANAGER ACCORDING
THE FINAL LAYOUT AND THE
RELEVANT RISK ANALYSIS

THE CUSTOMER HAS TO TAKE CABLE CHANNELS WITH DIAMETER Ø40 (1.5") FOR THE CONNECTION BETWEEN THE CONTROL UNIT AND THE PUSH-BUTTON

HLS UNDERLINES THAT:

- THE LAYOUT IS VALID JUST FOR THE QUOTED DIMENSIONS
- THE OUT OF SCALE MEASURES ARE HIGHLIGHTED
- THE LAYOUT CANNOT BE USED TO EXTRACT CONSTRUCTIVE DETAILS, EXCEPT WHERE SPECIFICALLY HIGHLIGHTED

HLS DECLINES ANY RESPONSIBILITY FOR THE IMPROPER USE
OF THE DGW FILE

Dimensions without tolerance, according to UNI EN 22768-1, precision level	MEDIUM	Precision level	Dimension groups Linear tolerances in mm								Dimension angular group tolerances (Short side)				
			from 0,5 to +3	> 3 +6	> 6 +30	> 30 +120	> 120 +400	> 400 +1000	> 1000 +2000	> 2000 +4000	over 4000	up to 70	>10 to 50	>50 to 120	>120 to 400
		Medium	±0,1	±0,1	±0,2	±0,3	±0,5	±0,8	±1,2	±2	±3	±1°	±0°30'	±0°20'	±0°10'

REVISIONS:				<p>COPYRIGHT THIS DRAWING IS COPYRIGHT AND THE PROPERTY OF THE AUTHOR IT MUST NOT BE RETAINED, COPIED OR USED WITHOUT THE AUTHORITY OF THE AUTHOR.</p> <p>DISCLAIMER THIS DRAWING AND ITS CONTENTS ARE ELECTRONICALLY GENERATED, ARE CONFIDENTIAL AND MAY ONLY BE USED FOR THE PURPOSE FOR WHICH THEY WERE INTENDED. THE AUTHOR WILL NOT ACCEPT RESPONSIBILITY FOR ANY CONSEQUENCES ARISING FROM THE USE OF THE DRAWING FOR OTHER THAN ITS INTENDED PURPOSE OR WHERE THE DRAWING HAS BEEN ALTERED, AMENDED OR CHANGED EITHER MANUALLY OR ELECTRONICALLY BY ANY THIRD PARTY.</p> <p>NOTE THIS IS AN UNCONTROLLED DOCUMENT ISSUED FOR INFORMATION PURPOSES ONLY, UNLESS THE CHECKED SECTIONS ARE SIGNED OR COMPLETED. FIGURED DIMENSIONS TAKE PRECEDENCE OVER SCALED. DO NOT SCALE REDUCED SIZE DRAWINGS. VERIFY DIMENSIONS PRIOR TO COMMENCING ANY ASSEMBLY OR CONSTRUCTION OR FABRICATION.</p>			
No.	REVISIONS DESCRIPTION	ISSUED BY	DATE				

HLS
Equipment



PROJECT TITLE

DRAWING TITLE
HLS - TR - 25 GOLD + TP

PROJECT LEADER:
A.SHARPE

DESIGNER:

DRAFTSPERSON:

SCALE:
NOT TO SCALE

JOB No.:

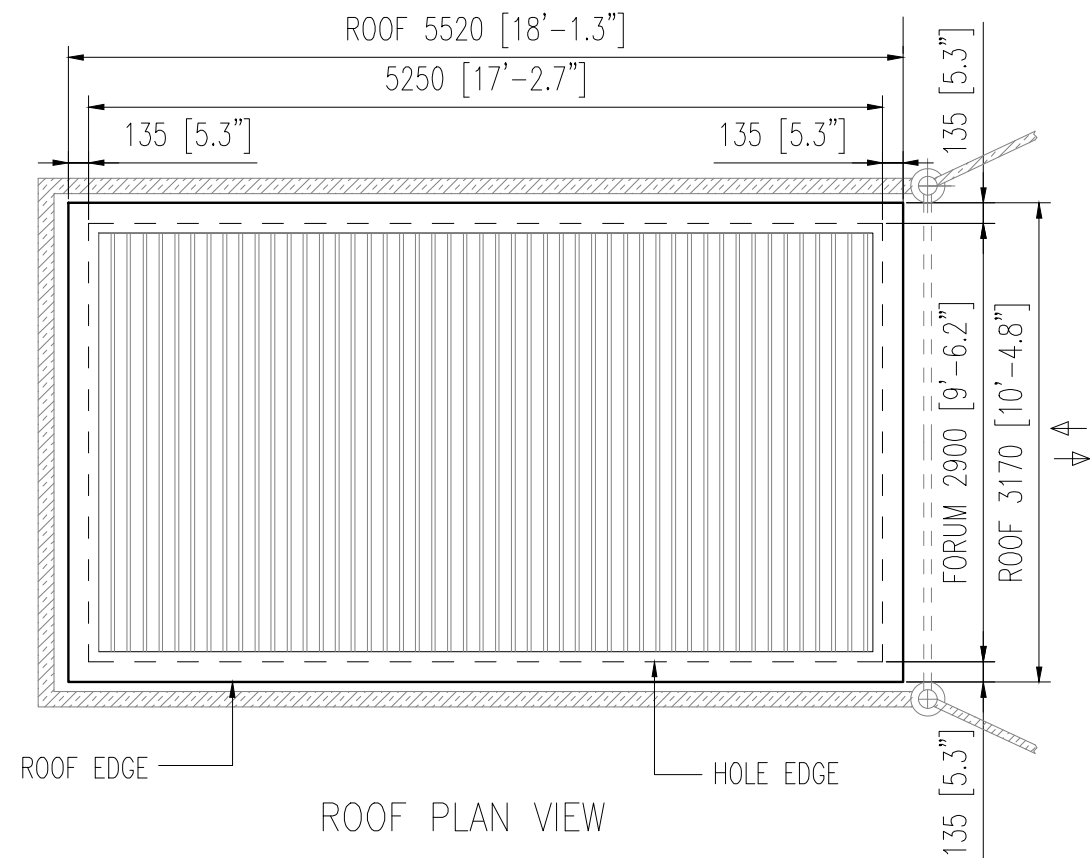
SIGNATURE: _____

DATE:

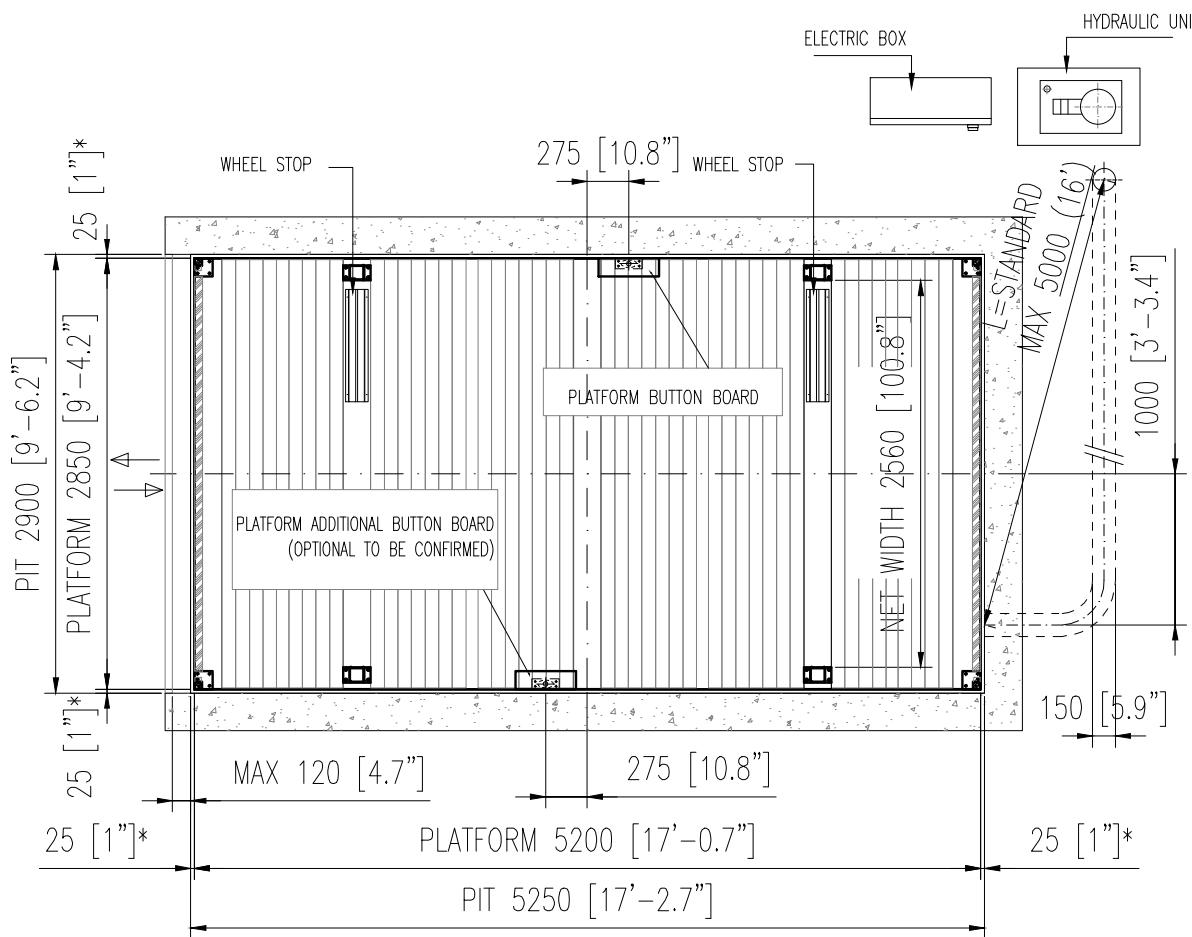
SHEET SIZE:
A3

DRAWING No.:

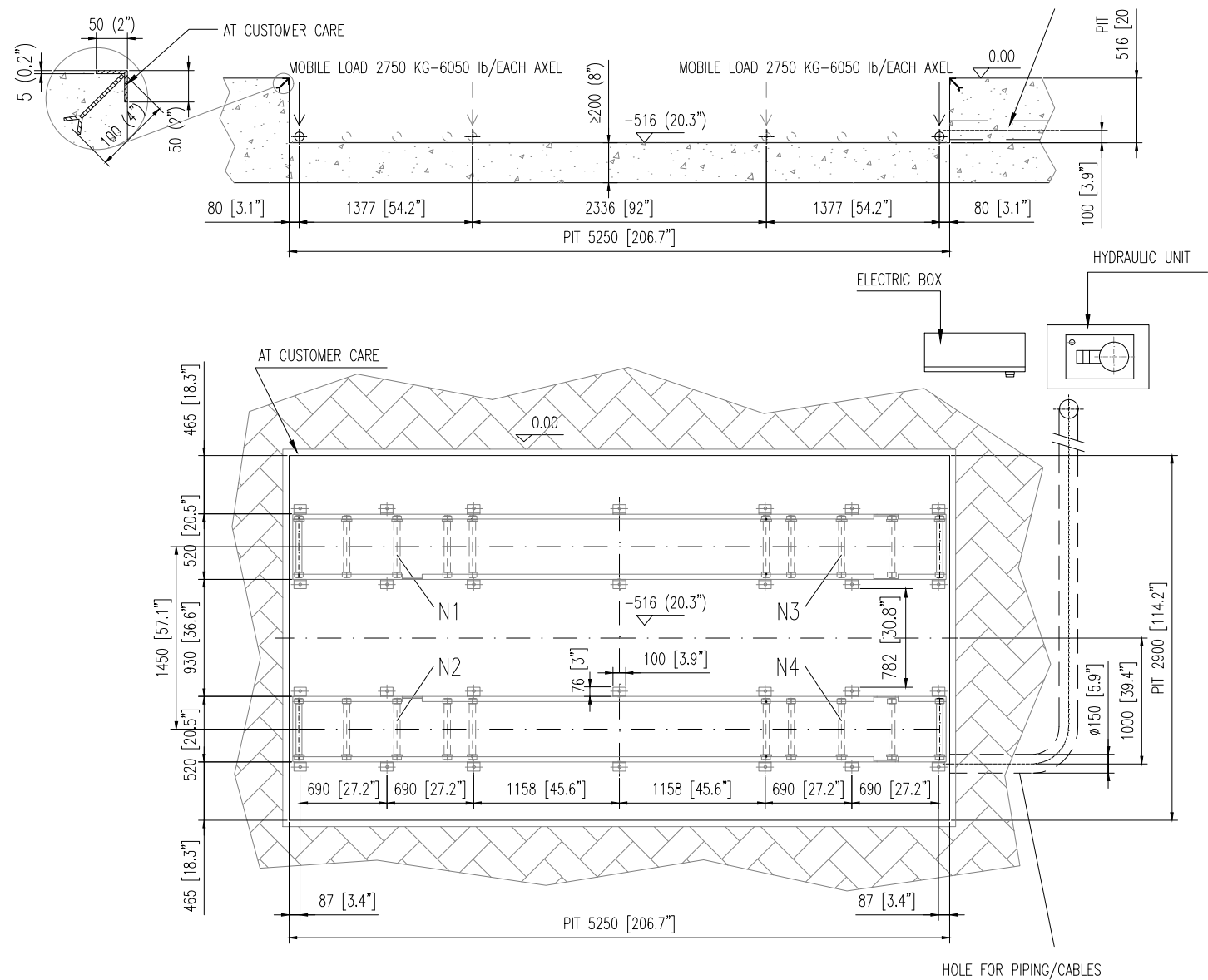
REVISION:



ROOF PLAN VIEW



PLATFORM PLAN VIEW

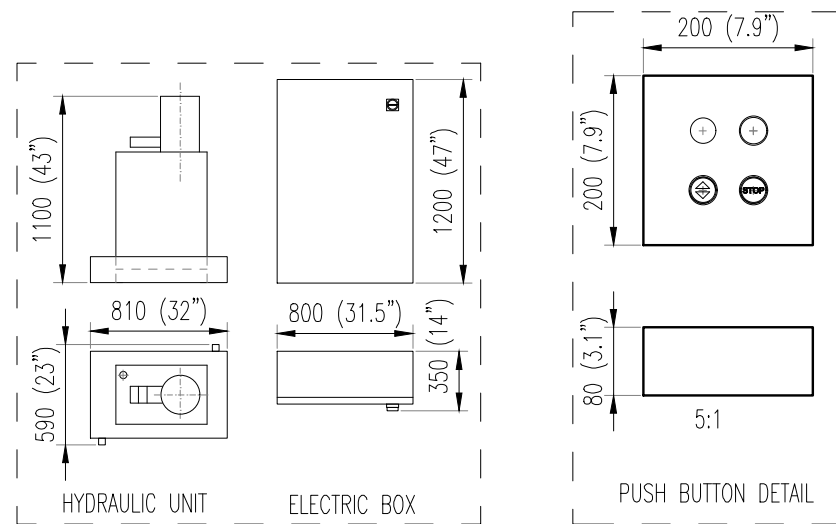


N1, N2, N3, N4 = Kg. 2750 - 6050 lb
- AN EXTRACTION WATER PIPING AND OR PLUNGER PUMP AN ADVISED

Floor and wall must to be made of concrete (Quality minimum C25)

DIMENSIONS mm-inch

PIT GENERAL LAYOUT



REVISIONS:		COPYRIGHT:	
		THIS DRAWING IS COPYRIGHT AND THE PROPERTY OF THE AUTHOR IT MUST NOT BE RETAINED, COPIED OR USED WITHOUT THE AUTHORITY OF THE AUTHOR.	
		DISCLAIMER:	
		THIS DRAWING AND ITS CONTENTS ARE ELECTRONICALLY GENERATED, ARE CONFIDENTIAL AND MAY ONLY BE USED FOR THE PURPOSE FOR WHICH THEY WERE INTENDED. THE AUTHOR WILL NOT ACCEPT RESPONSIBILITY FOR ANY CONSEQUENCES ARISING FROM THE USE OF THE DRAWING FOR OTHER THAN ITS INTENDED PURPOSE OR WHERE THE DRAWING HAS BEEN ALTERED, AMENDED OR CHANGED EITHER MANUALLY OR ELECTRONICALLY BY ANY THIRD PARTY.	
		NOTE:	
		THIS IS AN UNCONTROLLED DOCUMENT ISSUED FOR INFORMATION PURPOSES ONLY, UNLESS THE CHECKED SECTIONS ARE SIGNED OR COMPLETED. FIGURED DIMENSIONS TAKE PRECEDENCE OVER SCALED. DO NOT SCALE REDUCED SIZE DRAWINGS. VERIFY DIMENSIONS PRIOR TO COMMENCING ANY ON-SITE OR OFF-SITE WORKS OR FABRICATION. IF IN DOUBT - ASK	
No.	REVISION DESCRIPTION	DRAWN	DATE

HLS
Equipment



PROJECT TITLE		PROJECT LEADER:		SIGNATURE:	
		A.SHARPE			
		DESIGNER:			
		DRAFTSPERSON:		DATE:	
		MM			
		SCALE:		SHEET SIZE:	
		NOT TO SCALE		A3	
		JOB No.:		DRAWING No.:	
		-		02	
				REVISION:	